

III. SKELETAL SYSTEM

BONES OF THE SKULL (1)

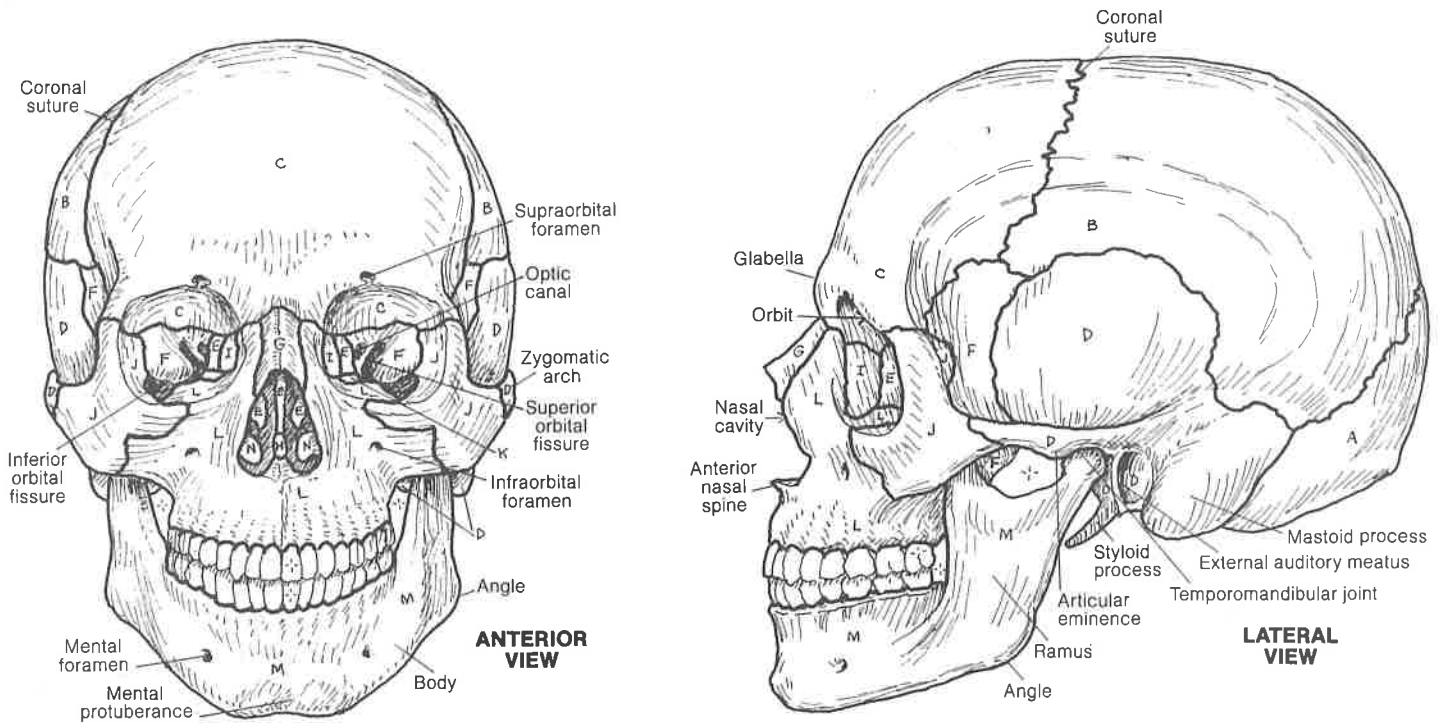
CRANIAL (8):*

OCCIPITAL (1)_A PARIETAL (2)_B FRONTAL (1)_C
 TEMPORAL (2)_D ETHMOID (1)_E SPHENOID (1)_F

FACIAL (14):*

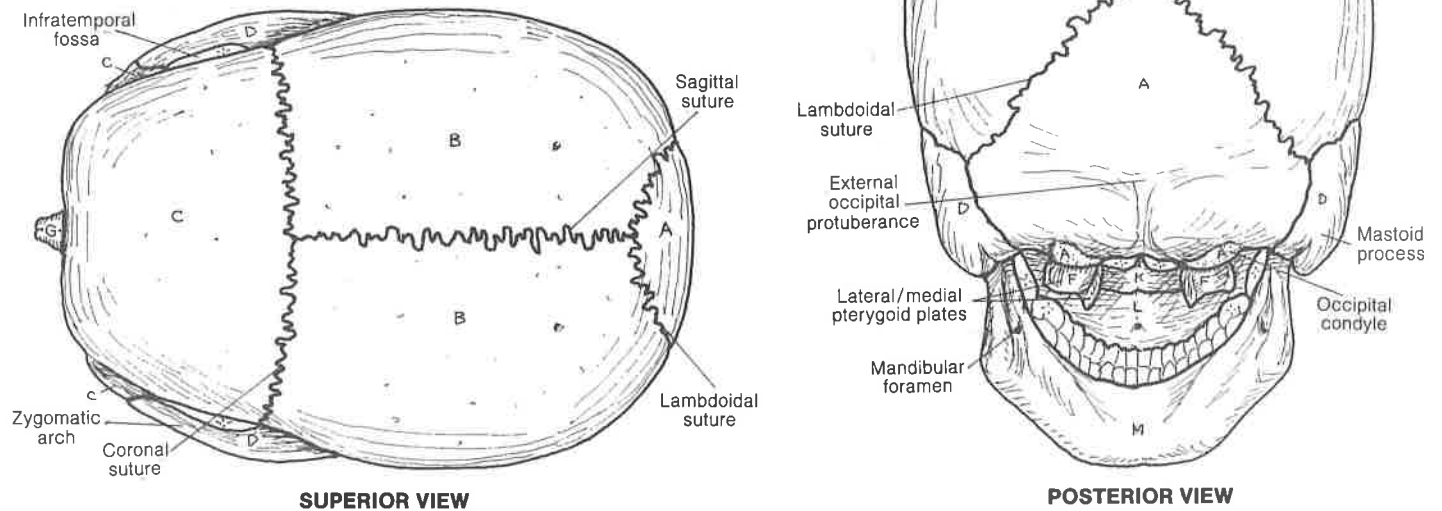
NASAL (2)_G VOMER (1)_H LACRIMAL (2)_I
 ZYGOMATIC (2)_J PALATINE (2)_K MAXILLA (2)_L
 MANDIBLE (1)_M INFERIOR NASAL CONCHA (2)_N

CN: Work with this plate and the next one at the same time. Save the brightest colors for the smallest bones; use light colors on bones with surface detail. Work one bone at a time, coloring it where it appears in any of the 7 views shown on this and the next plate.
 (1) In the anterior view, do not color the darkened areas in the orbits and nasal cavity.



The skull is composed of *cranial bones* (forming a vault for the brain) and *facial bones* (giving origin to the muscles of facial expression and providing buttresses protecting the brain). Except for the temporomandibular joint (a synovial joint), all bones are connected by generally immovable fibrous sutures.

The orbit is composed of 7 bones, has 3 significant fissures/canals, and is home to the eye and related muscles, nerves, and vessels. The most delicate of the skull bones is at the medial orbital wall (I). The external nose is largely cartilaginous and is, therefore, not part of the bony skull.



SUPERIOR VIEW

POSTERIOR VIEW