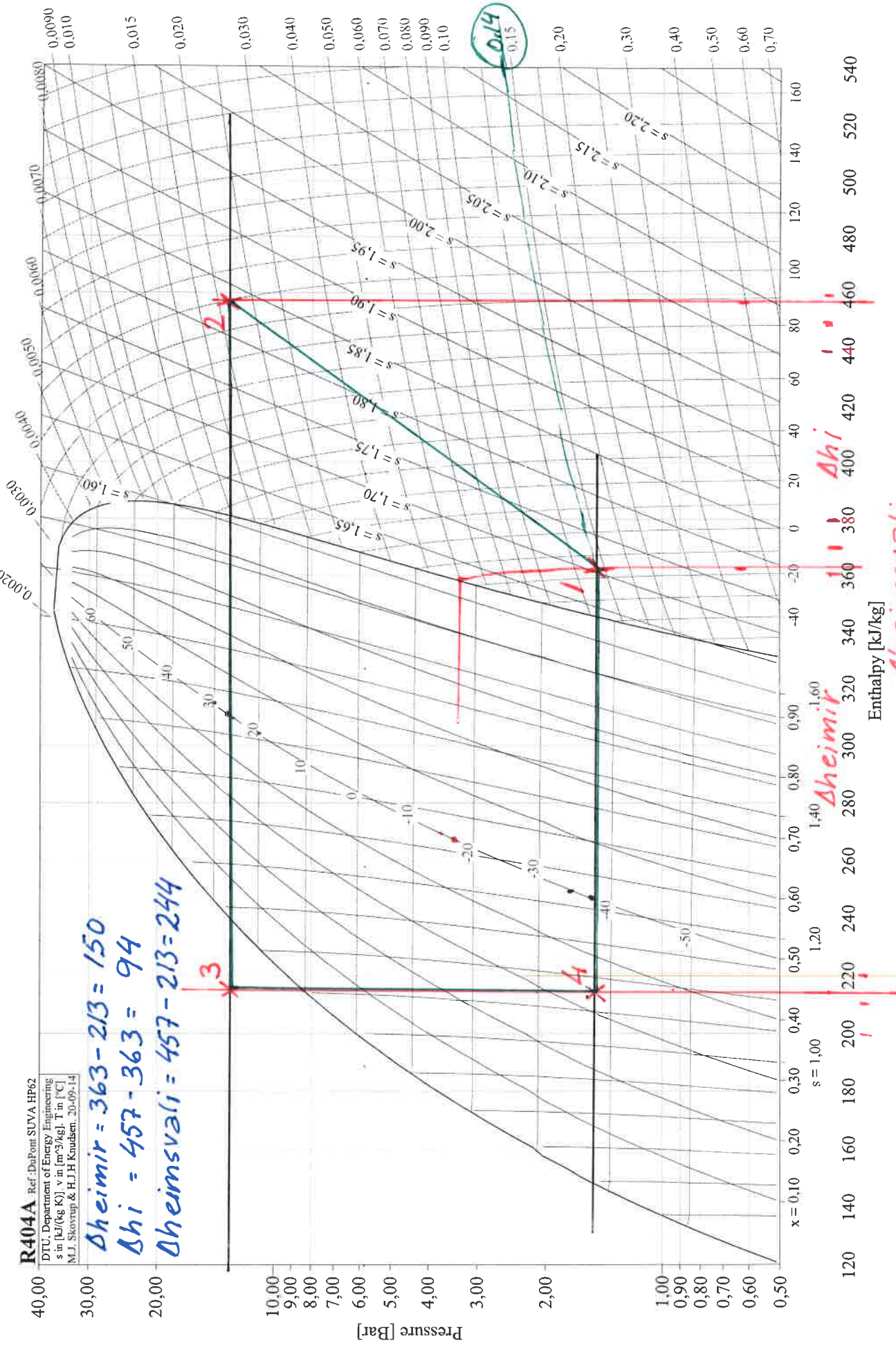


$\dot{V} = 0,031$

R404A Ref: DaPont, SUVA HP62
 DTU, Department of Energy Engineering
 s in [kJ/(kg K)] v in [m³/kg], T in [°C]
 M.J. Skovrup & H.J.H. Knudsen, 20-09-14

$\Delta h_{\text{imir}} = 363 - 213 = 150$
 $\Delta h_i = 457 - 363 = 94$
 $\Delta h_{\text{eimsvali}} = 457 - 213 = 244$

26,75



Δh_i
 $\Delta h_{\text{eimsvali}}$
 457
 363

213